

Partnering for Success: How Santa Fe Public Schools Meet the Needs of Their Students

Jeff Pinkerton and Joe Taylor

Evolving Special Education Conference Hosted by blazer Sponsored by VOCOVISION

About Your Presenters



Jeff Pinkerton

- Executive Director of Special Education for Santa Fe Public Schools
- West Texas State A&M University
- Served as the Executive Director of Children's Learning Centers of Amarillo
- Chief Executive Officer at PG Cables, Inc.
- 8 Years of Experience as a Middle School Science Teacher and Head Tennis Coach
- 10 years in Special Education



Joe Taylor

- Lead Facilitator for Telepractice for Santa Fe Public Schools
- Wayland Baptist University
- 15 Years in Special Education
- Extensive experience owning and operating multiple locations for Bridgestone and Firestone commercial and retail operations.
- Currently serves with Meals on Wheels, Hospice, and works in Special Education

Evolving Special Education Conference Hosted by blazer Sponsored by VOCOVISION

Santa Fe Public Schools & VocoVision by the Numbers

11,058

Total Student Population

2,850

Students with IEPs (Excluding Gifted)

VocoVision Practitioners:

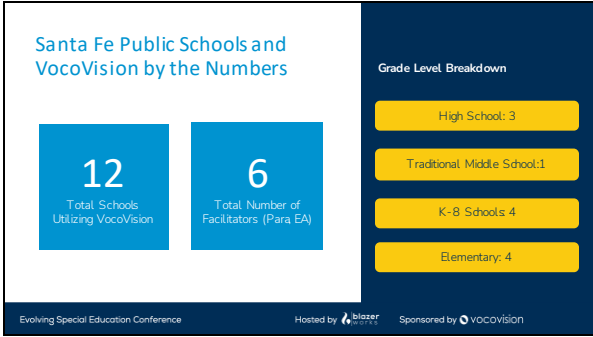
Vision Specialists: 3

Speech and Language Pathologists: 4

Occupational Therapists: 3

Physical Therapist 1

Evolving Special Education Conference Hosted by blazer Sponsored by VOCOVISION



Thank you!

Evolving Special Education Conference | Hosted by | Sponsored by
