

# From Caseload to Workload:

## Systematic Challenges and Opportunities

Melissa D. White  
Managing Clinical Director



Evolving Special Education Conference    Hosted by     Sponsored by 

---

---

---

---

---

---


---


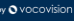
---

## Pathway to Leadership

1998 — 2011 — 2021

Clinical Fellowship    Clinical Director    Managing Clinical Director



Evolving Special Education Conference    Hosted by     Sponsored by 

---

---

---

---

---

---

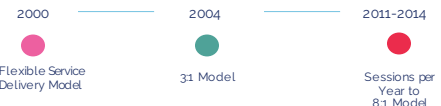
---


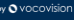
---

## Key Moments

2000 — 2004 — 2011-2014

Flexible Service Delivery Model    3:1 Model    Sessions per Year to 8:1 Model



Evolving Special Education Conference    Hosted by     Sponsored by 

---

---

---

---


---

---

---

---

### Caseload



- # Number of students with IEPs
- ✗ Typically, not included MTSS/RTI 504s
- = Direct intervention services

Evolving Special Education Conference | Hosted by blazer | Sponsored by VOCOVISION

---

---

---

---

---

---

---

---



### What's Missing?

- Indirect services with students inside and outside of general education
- Case management
- Compliance
- Paperwork
- Attendance at meetings
- Counseling
- Collaboration
- Advocacy

Evolving Special Education Conference | Hosted by blazer | Sponsored by VOCOVISION

---

---

---

---


---

---

---

---

### Workload



- + Direct Services
- + Indirect Services
- + Caseload Management

Evolving Special Education Conference | Hosted by blazer | Sponsored by VOCOVISION

---

---

---

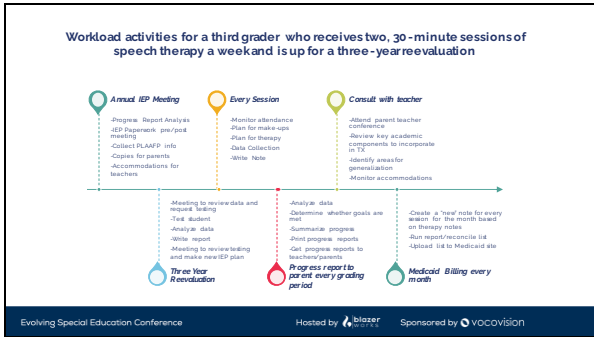
---

---

---

---

---




---

---

---

---

---

---

---

---

---

---

---

---

## Impacts On Staff & Students

- Caseload doesn't take what isn't counted into account
- Job satisfaction and retention
- Student progress on goals & objectives

Evolving Special Education Conference | Hosted by blazer | Sponsored by VOCCOVISION

---

---

---

---

---

---

---

---

---

---

---

---




---

---

---

---

---

---

---

---

---

---

---

---




---

---

---

---

---

---

---

---

### Table Talk Activity

- Identify *strengths*
- Determine areas of *need*
- Capitalize on *opportunities*
- Pinpoint the *threats*

Evolving Special Education Conference | Hosted by | Sponsored by

---

---

---

---

---

---

---

---

## Questions?

[Melissa.White@vocovision.com](mailto:Melissa.White@vocovision.com)

Evolving Special Education Conference | Hosted by | Sponsored by

---

---

---

---

---

---

---

---